



# College of Liberal Arts

# Dwaine Plaza

Professor of Sociology

Associate Dean

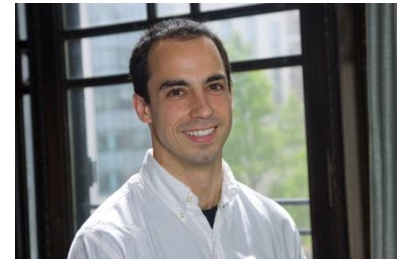
College of Liberal Arts

# Todd Pugatch

Assistant Professor  
Economics

# Todd Pugatch

## School of Public Policy (Economics)



- Research interests:
  - international economic development
    - How do young people in developing countries make decisions about their future?
    - What policies and programs can improve education systems in developing countries?
    - What are the causes and consequences of international migration?
  - higher education in the U.S.
    - What policies and programs can promote student success?
- Webpage: [people.oregonstate.edu/~pugatcht](http://people.oregonstate.edu/~pugatcht)
- Contact: [todd.pugatch@oregonstate.edu](mailto:todd.pugatch@oregonstate.edu)

# Keith Baker

Assistant Professor  
Public Policy



PILOT

# Peter Betjemann

Associate Professor  
Director School of Writing,  
Literature, and Film

## Major Projects:

*Talking Shop: The Language of Craft in an Age of Consumption*  
(University of Virginia Press, 2011)

*The Critical Canvas: Antebellum Narrative Painters and the  
Radicalization of U.S. Literature* (current project)



Asher Durand, *In the Woods* (1855).  
60 ¾" x 48". Metropolitan Museum of Art

### Areas of Advising Interest:

- U.S. Culture, especially 1789-1914
- Literature of the U.S.
- Art History of the U.S.
- History of Labor and Craft
- Representations of Race
- Charlotte Perkins Gilman and the history of first-wave feminism
- Humanities in U.S. Education
- Academic affairs and University administration



John Quidor, *Antony Van Corlear Brought into the Presence of Peter Stuyvesant* (1839.) 27.4" x 34.1".  
Munson-Williams-Proctor Art Institute.

Peter Betjemann  
Associate Professor  
Director, School of Writing,  
Literature, and Film  
[Peter.Betjemann@oregonstate.edu](mailto:Peter.Betjemann@oregonstate.edu)  
(541) 737 1634



# Tara Williams

Associate Professor  
Writing, Literature and Film

# Literature & culture in medieval England (500-1500), medievalism, & magic



Tara Williams, Associate Professor of English  
[tara.williams@oregonstate.edu](mailto:tara.williams@oregonstate.edu)